

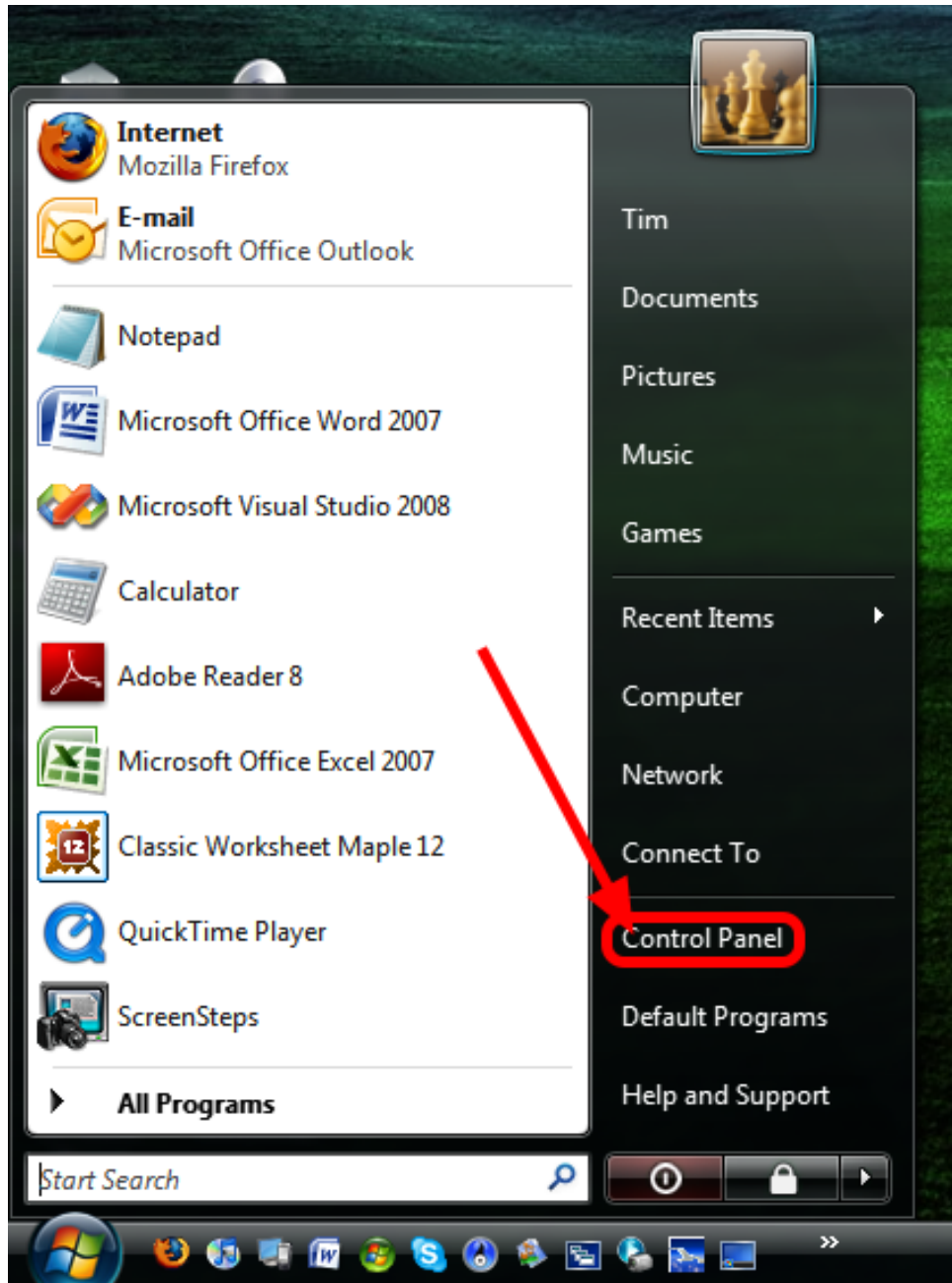
Configuring Remote Computer To Allow Access

Subject Descriptors: Networking, Remote Connection

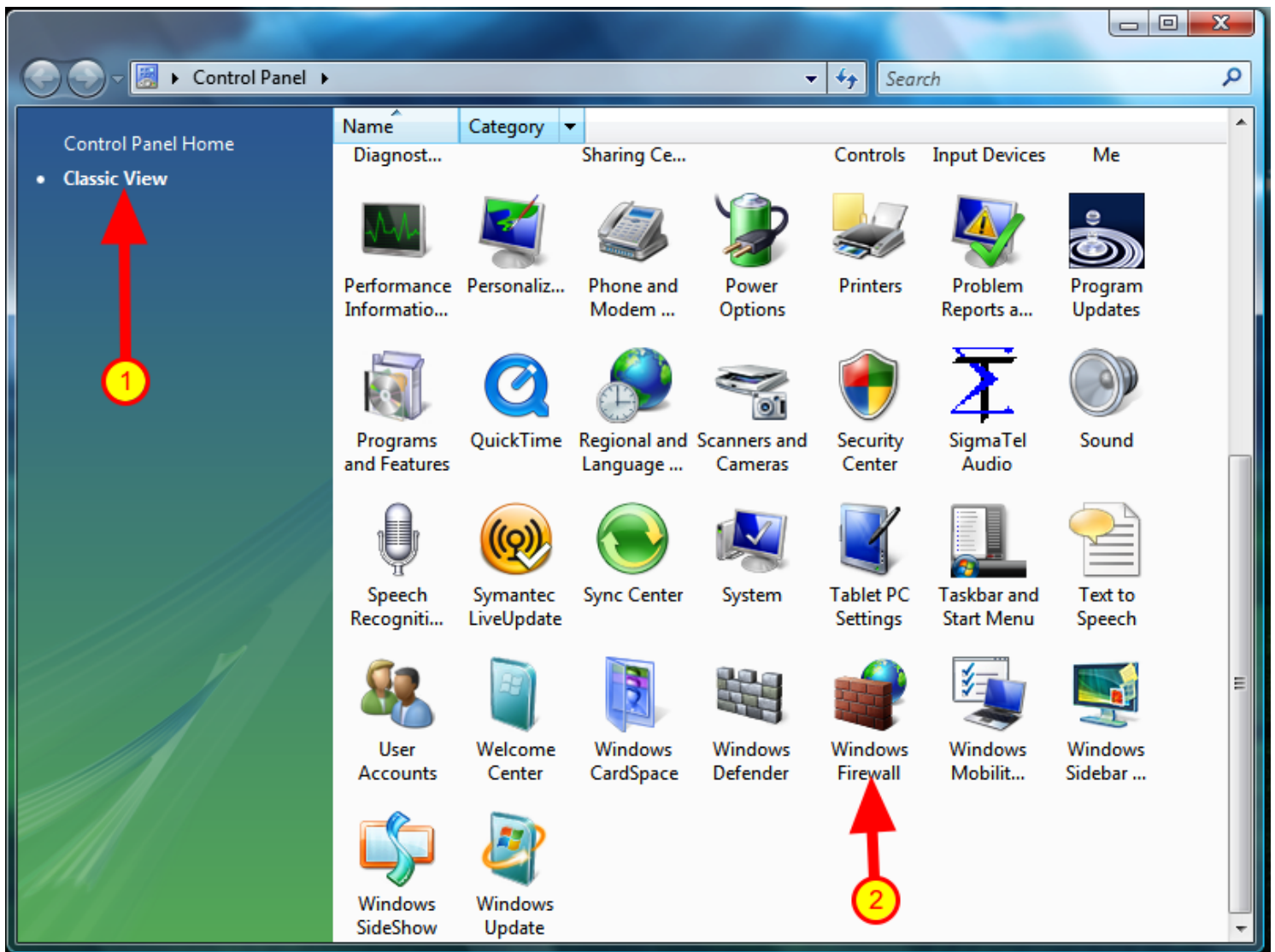
Application (Version): Remote Desktop - Windows Vista

Task Description: How can I remotely connect to my home computer from my work computer?

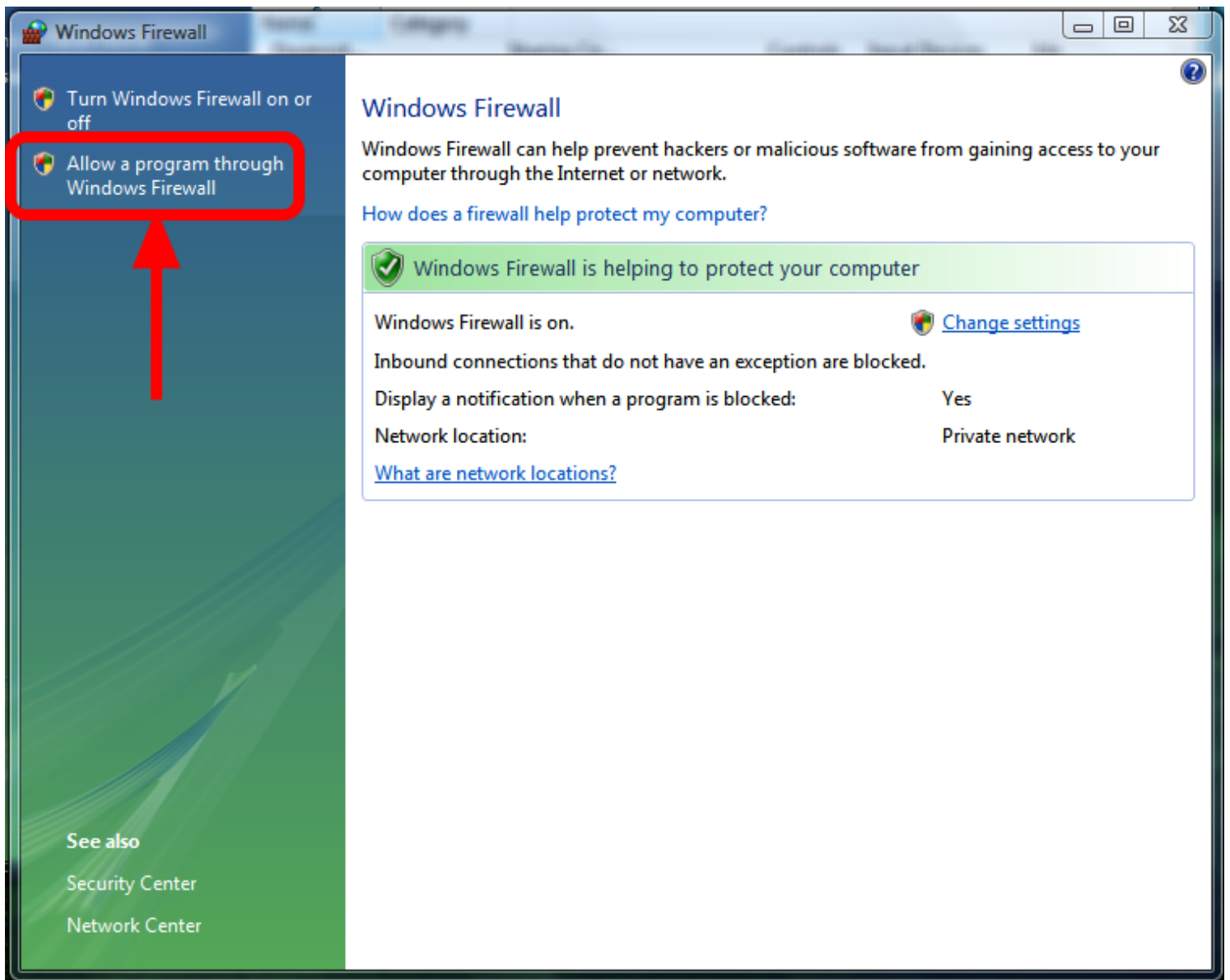
Tutorial Date: 13 May 2009, by Tim Holmes



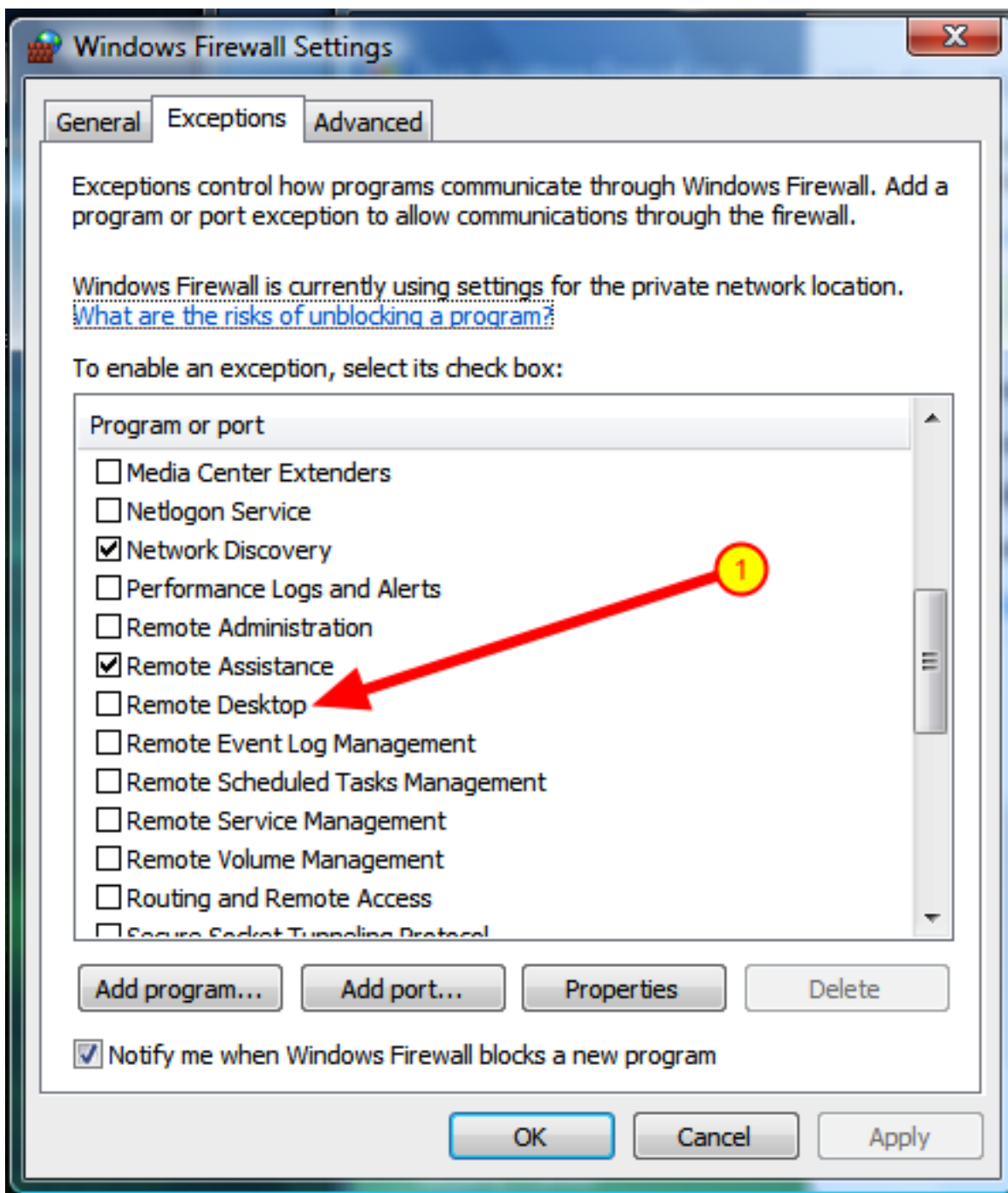
Select "Control Panel" from the Start menu



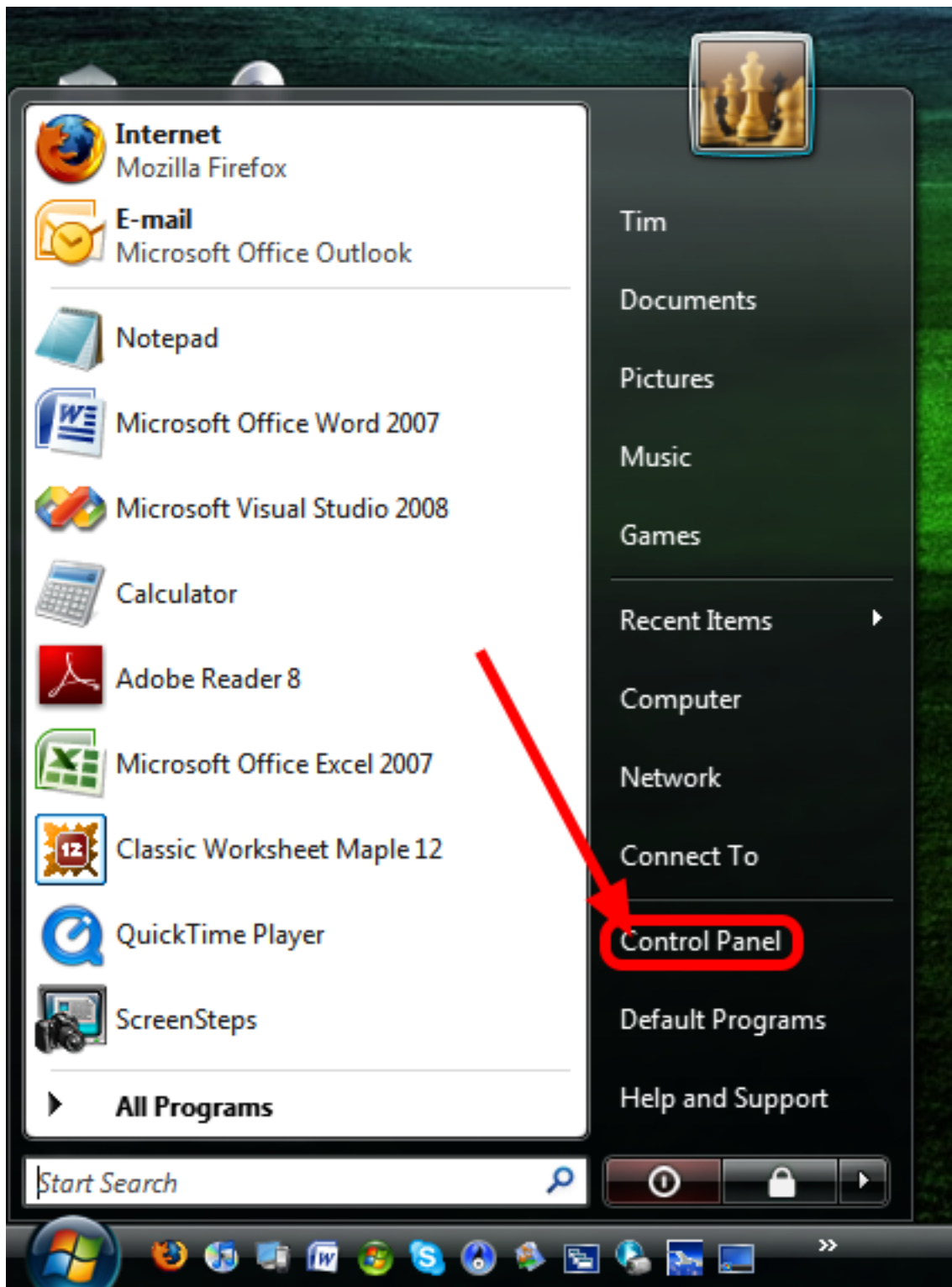
- 1) Click on "Classic View"
- 2) Then go to "Windows Firewall"



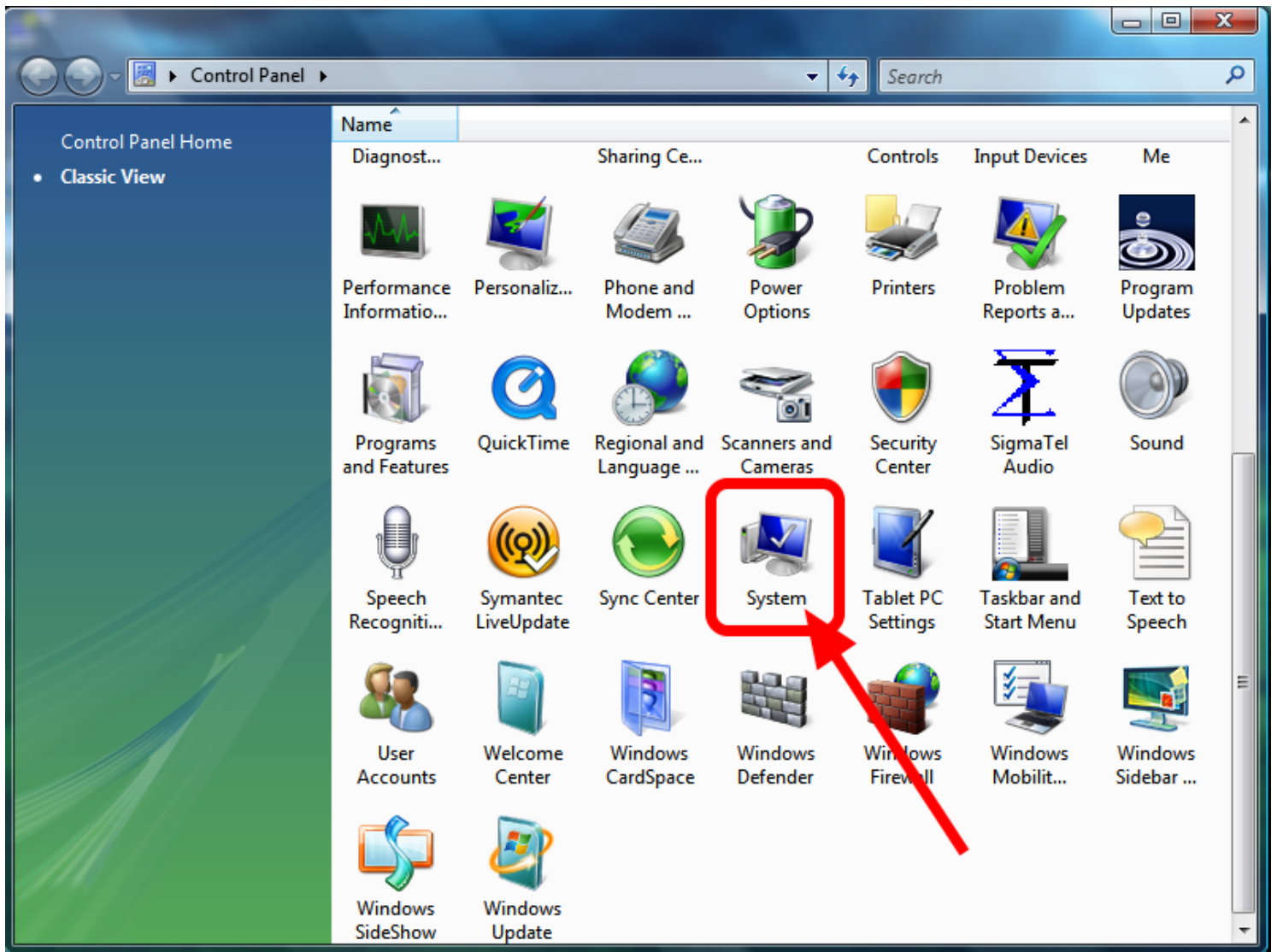
In the "Windows Firewall" options click on the "Allow a program through Windows Firewall"



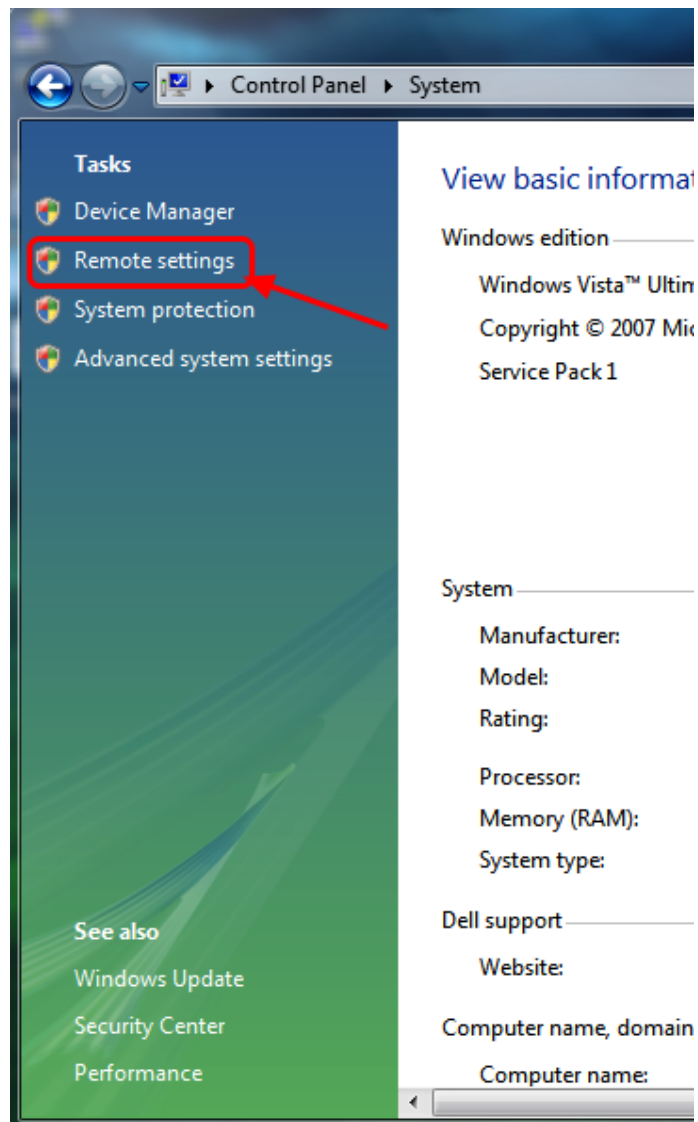
1) Make sure that the "Remote Desktop" is CHECKED ON
(this example is CHECKED OFF)



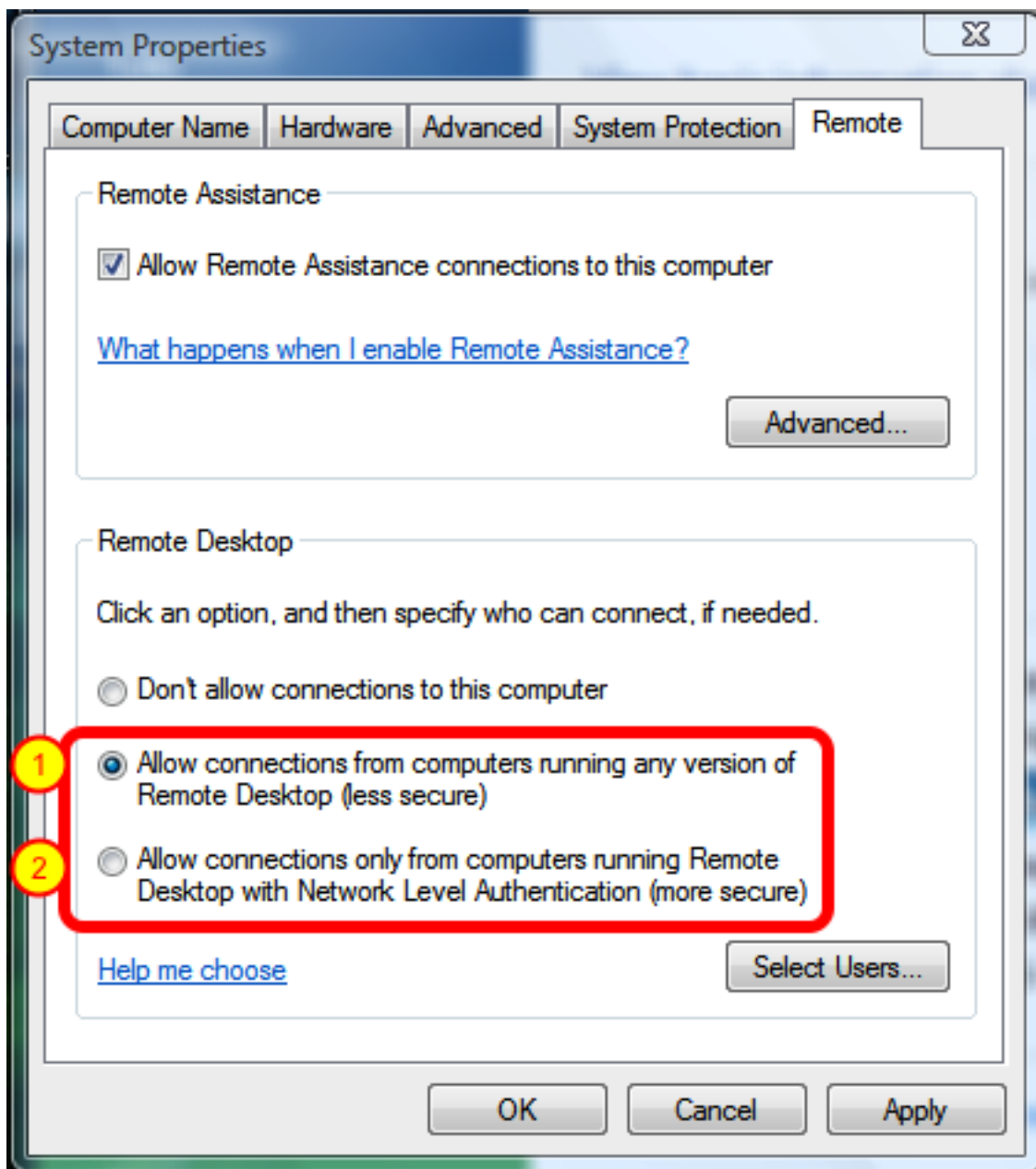
Now, we need to make one more change to the system. So, again from the Start Menu we will select "control Panel" from the Start menu.



This time, we will click the "System" icon.



Here we will click the "Remote Settings" menu button.



Now, make sure that either:

- 1) ***All connections from computers running any version of Remote Desktop***
or
- 2) ***Allow connections only from computers running Remote Desktop with Network Level Authentication***
is checked, and then click "OK".

And with that, we have completed all the necessary procedures so that you can remotely log into your computer from another computer.