

Obtain IP Address Of Remote Computer

Subject Descriptors: Networking, Remote Connection

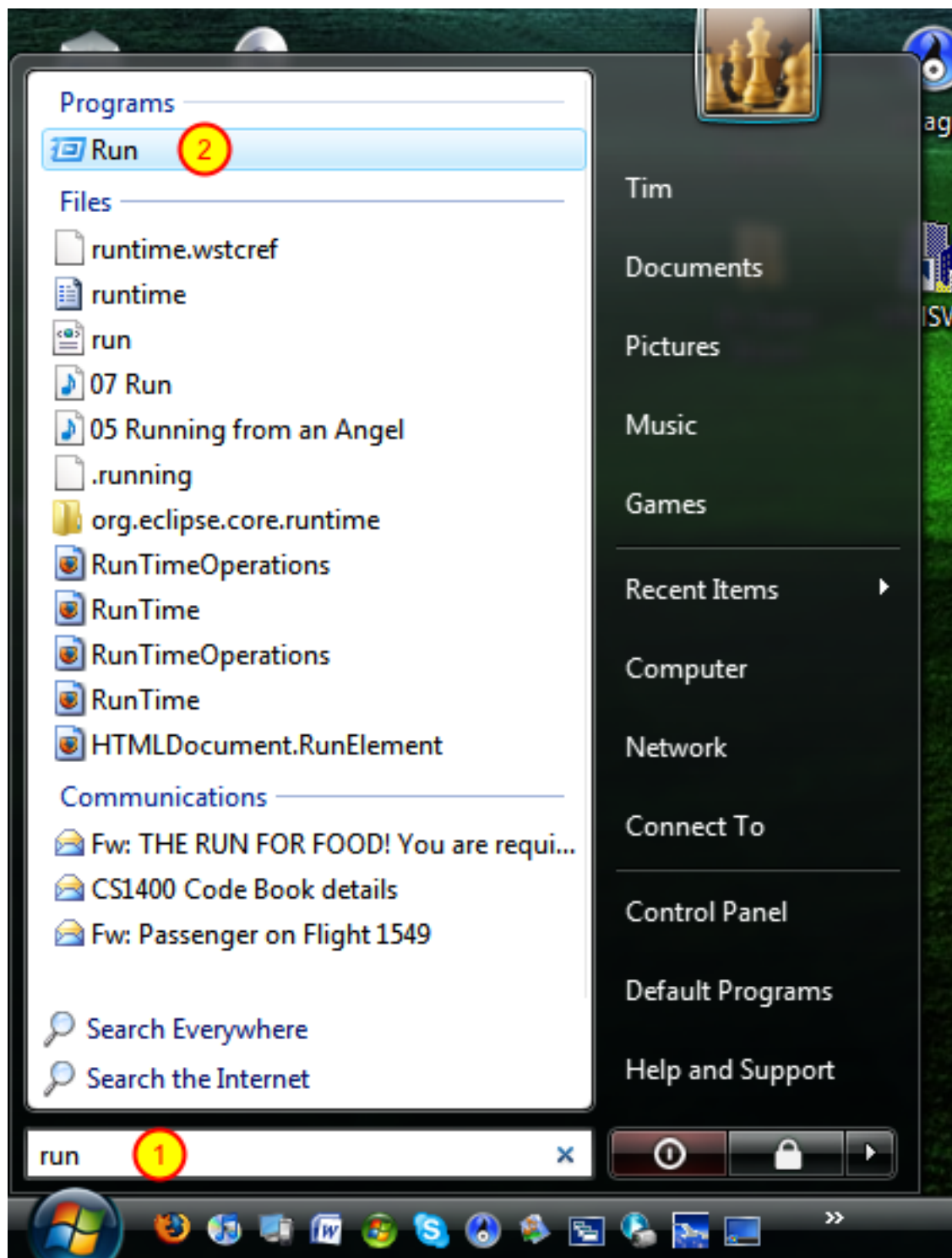
Application (Version): Remote Desktop - Windows Vista

Task Description: How can I remotely connect to my home computer from my work computer?

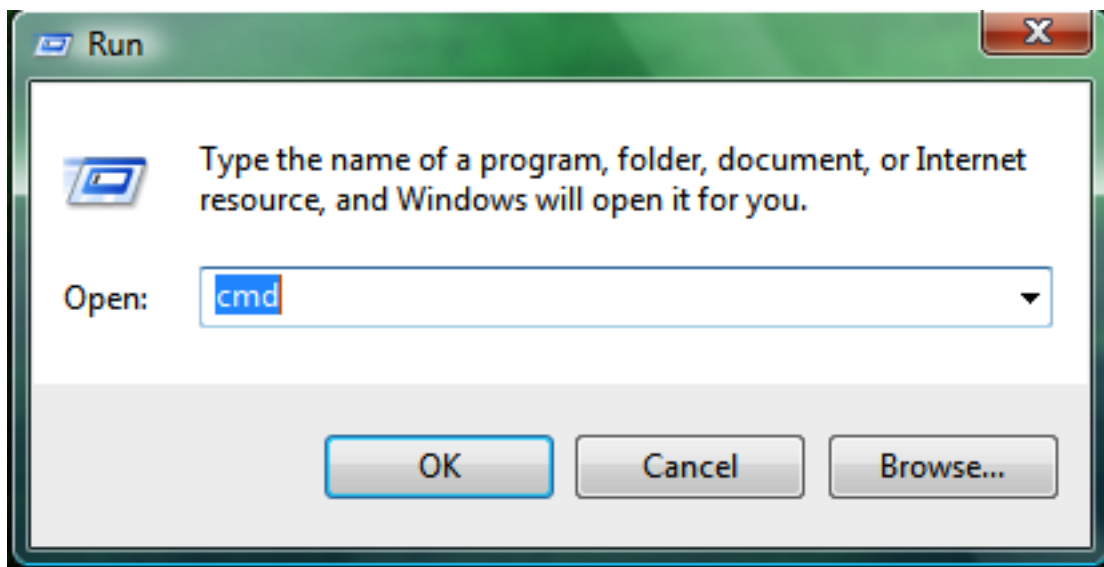
Tutorial Date: 13 May 2009, by Tim Holmes



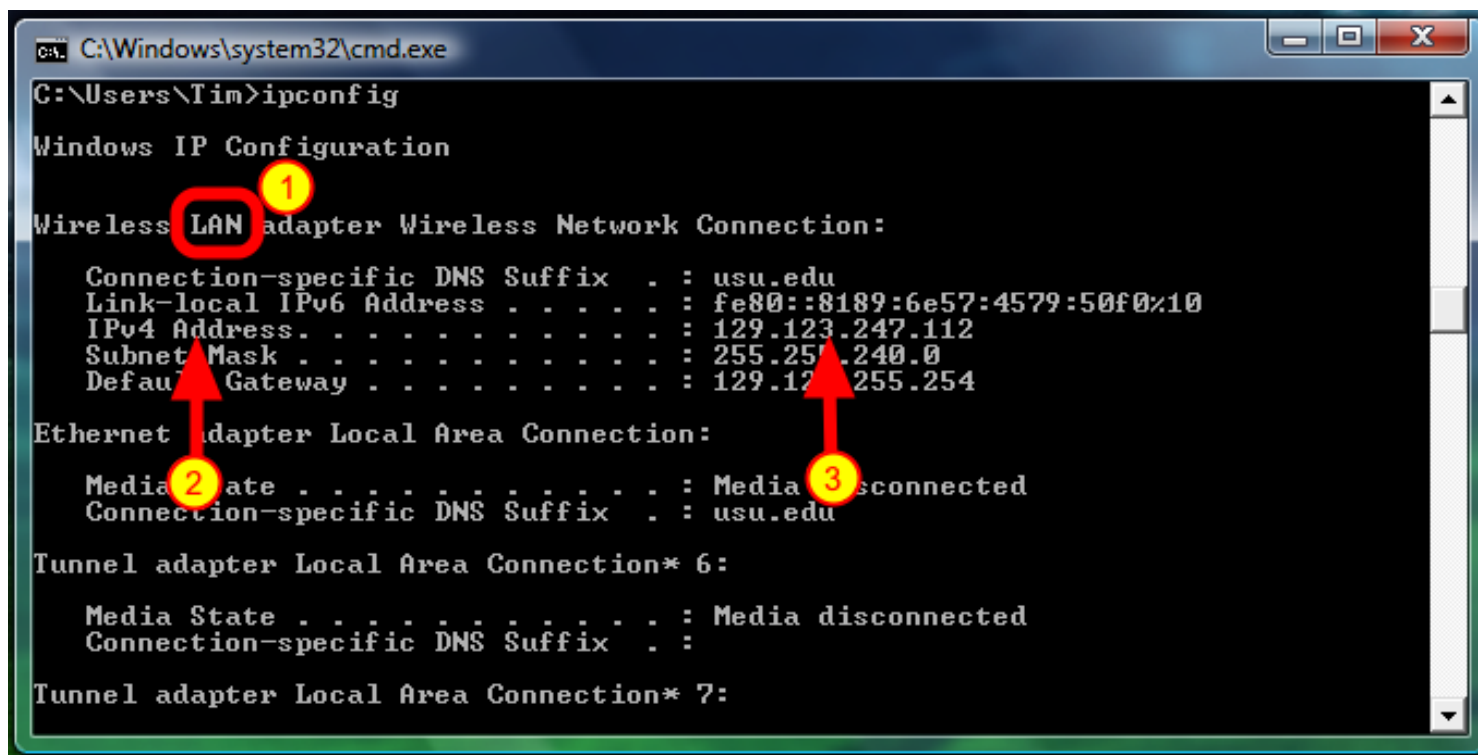
Click the start button.



- 1) Type run in the search bar.
- 2) Click "Run" from the results



In the drop-down box type "cmd" as above. Then click "ok".



In the command console type: "ipconfig"

1) scroll down to where you see "LAN adapter"

2) next look for "IP Address"

3) find the 3 digits of 4 octets

-This is the IP Address that you will need in order to remotely log into this computer.