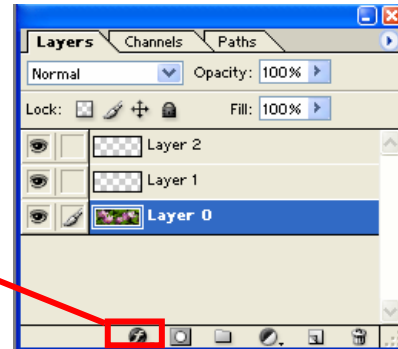


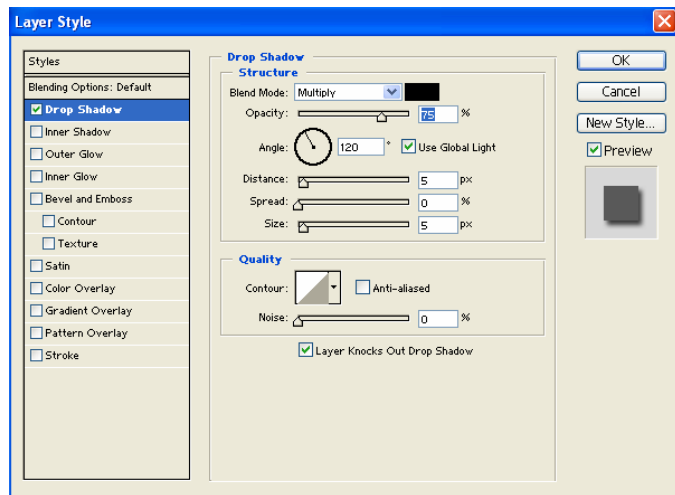
TIPS TRICKS AND HOW TO...

Use Layer Styles

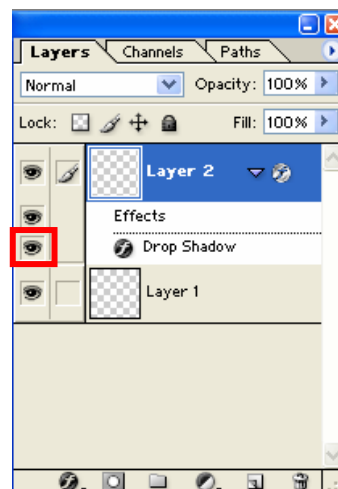
Layer styles are a great way to add effects to your layers. To access the styles options, select the layer you would like to add a style to and then click on the **styles icon** at the bottom of the layers palette.



The styles dropdown box contains many style choices. Select one of the options and a new dialogue box will appear giving you further choices for that particular style. From the styles dialogue box, click the checkbox next to the item you want to add. To adjust the settings for that style, click on the title of the style to view the settings.



If you have applied a style and decide that you no longer want that style, simply hide it by clicking on the “eye” icon next to it from the layers palette. Or you can reenter the layers style box and uncheck that item from the menu.



FACT