

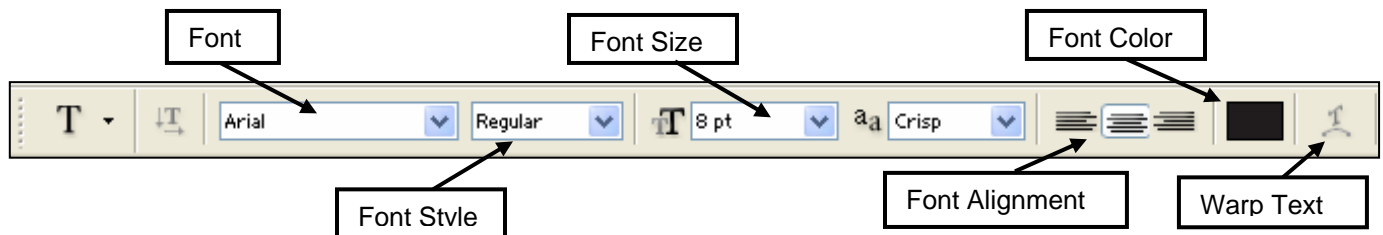
TIPS TRICKS AND HOW TO...

Use Typography

The type tool allows you to type directly on your image. You can apply effects and styles to your text just as you would any other layer.



The typography tool bar has a lot of choices for formatting your text. From this toolbar you can change the font, style, size, alignment, and color of your text.



You can make additional text adjustments by using the character palette. You can access the character palette by choosing "Window" from the menu bar and clicking on "Character."

